



# YAK25 OTI



## CONTROL UNITS:

YAK25 OTI ——— CP,YAK OTI



### INDUSTRIAL USE

control unit with built-in inverter and virtual encoder  
double ventilation on motor and control unit  
oil lubricated reductions  
personalised release key



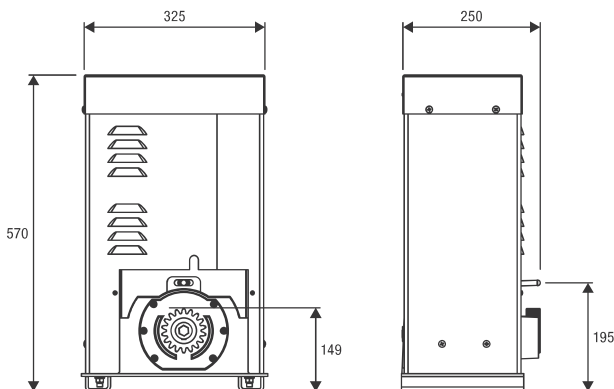
**up to 2500 kg**



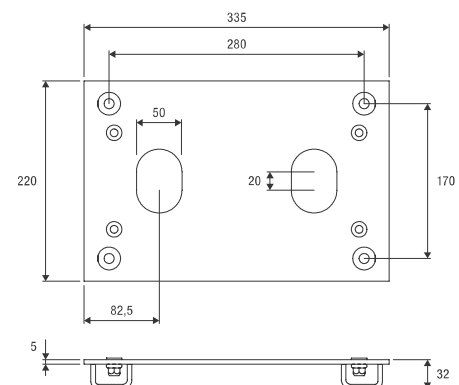
## 230 Vac | intensive use

- Three-phase 230 VAC geared motor for intensive use with incorporated control unit, self-ventilation system and metal oil lubricated reductions to guarantee maximum performance also at low temperatures
- The control unit, located on the top of the motor, facilitates wiring operations
- The virtual encoder allows proper management of the slowing-down phases, movement tracking (STC system), and torque management in relation to the position of the gate, which guarantees maximum safety
- Adjustable speed from 10 to 24 m/min according to gate weight
- Safety sensor that stops the motor power supply during release operations
- External metal casing with the possibility to install PUPILLA/PUPILLA.T photocells (as accessory)
- Receiver ONE2.WB is supplied

Raised foundation plate included. Height 32 mm, Floor fixing distance 280x170 mm, no. 4 Ø 11 mm, motor fixing distance 269x106 mm n.4 M10.

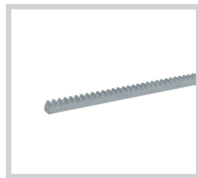


Weight (kg)	Speed (m/min)
2,500	10
2,000	11
1,500	14
1,000	16
500	24

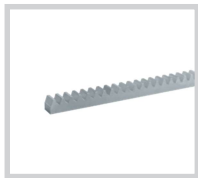


**RI.M4Z**

M4 galvanised rack to weld 22x22x2000 mm.  
**Package of 1 pc.**

**RI.M4ZF**

Galvanised slotted M4 rack 22x22x2010 mm for fastening to the side with the teeth. Supplied with M6 screws.  
**Package of 1 pc.**

**RI.M6Z**

M6 galvanised rack to weld 30x30x2000 mm. Requires pinion RI.P6.  
**Package of 1 pc.**

**RI.P6**

M6 gear, it needs the rack RI.M6Z.

**RF.SUN**

Battery-operated device recharged by means of a photovoltaic panel applied on a mobile edge.

**RF**

Device with a non rechargeable battery, with guaranteed duration 2 years.

**SC.RF**

Device powered at 12/24 Vdc with self-test function and 2 outputs for connection to the electronic control units.

**AUTOMATISMI BENINCÀ Spa** • Via del Capitello, 45 • 36066 Sandrigo (VI) ITALY • T +39 0444 751030 • sales@beninca.com

TECHNICAL DATA	YAK25 OTI
Power supply	230 Vac (50-60Hz)
Motor supply	≈ 230 Vac
Max absorbed current	4,0 A
Max Thrust	2500 N
Max opening speed	24 m/min
Duty cycle	intensive use
Protection level	IP44
Operating temperature	-20°C /+50°C
Lubrication	OIL
Max gate weight	2500 kg
Driving gear for rack	M4 Z18
Weight	36,3 kg
Items no. per pallet	8